



NorthStar Enterprise

NorthStar Rocket 2.3.9014

Rocket v2.3.9014
Installation

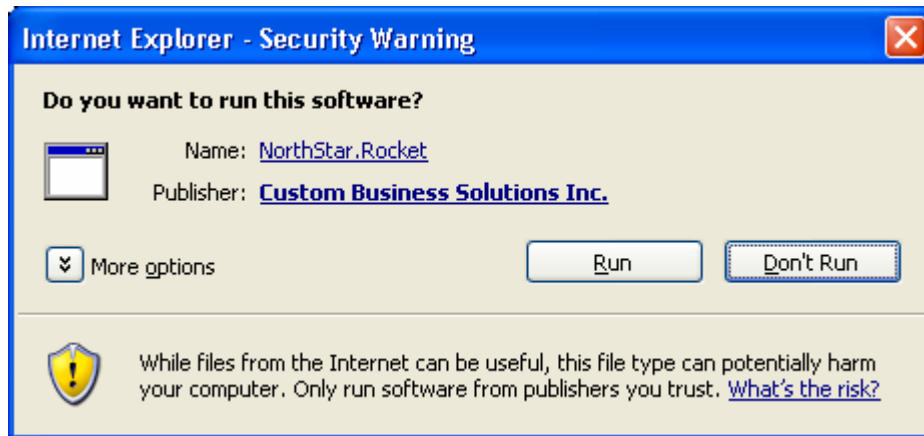
Rocket v2.3.9014 Installation

Rocket Installation Instructions:

This documentation will guide you through running the Rocket Client software Installation. Users must have administrative privileges to install this product.



Download and run the Rocket installation media. You may receive a security warning (pictured below).



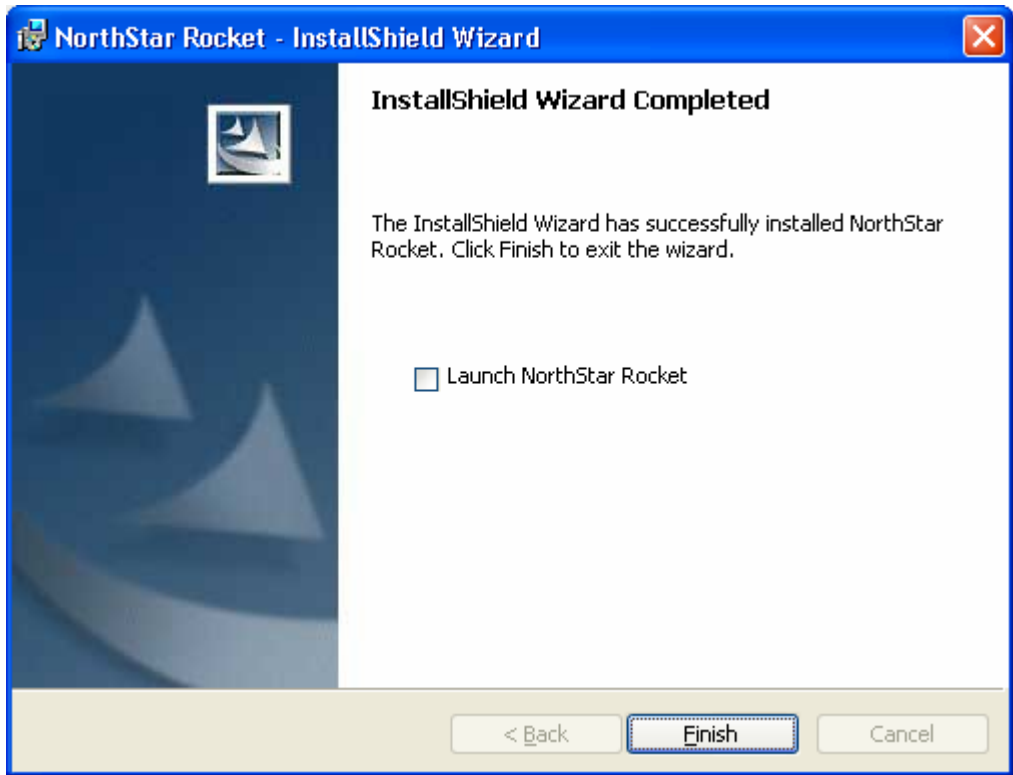
1. Click **Run** if prompted.
2. Click **Next** at the installation screen.
3. Review the **End User License Agreement**. You can also print the EULA.
4. If you accept the terms, click the radio button and **Next**.
5. Enter a **User Name** and **Organization**. Click **Next**.
6. Click **Install**.



**Rocket
2.3.9014
Installation
(continued)**

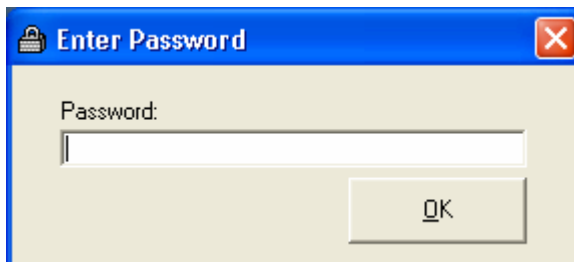
When the Rocket Installation is complete, you will be prompted to **Launch NorthStar Rocket**. Check this option and click Finish.

Note: If you close the installation without checking the option to start Rocket for the first time, you can run the configuration setup by opening: **C:\rocket\rsetup.exe**.



The configuration password is **ftpauto**.

**Configure
Rocket
Settings**



Configure Rocket Settings (continued)

Note: You must have added the Rocket client to Mission Control in order to complete the configuration. For assistance with this, please see your CBS representative or CBS reseller. Information can also be obtained from the Landing Pad documentation located at <http://www.northstarenterprise.com>.

Rocket Setup

ID: 001
Pass: rocketpassword
Connection: Use LAN

Server: 192.168.1.100
Port: 55555

Note: The settings below are used to control the schedule of the Rocket Launcher Program RLAUNCH.EXE, To use this feature RLAUNCH.EXE must be in Startup. The Rocket Launcher will only run ROCKET.EXE without a program argument, therefore only the Default Session setup in Mission Control can be run using the Rocket Launcher.

Time To Send: 12:00 AM
Retry After: 15 Minutes

Cancel Save

1. Enter the **Rocket Client ID**. This number comes from **Mission Control** and is assigned when a Rocket is added to that application.
2. Enter the **Rocket Client Password** that was assigned in **Mission Control**.
3. Check **Use LAN** as the connection type.
4. Enter the **Landing Pad Server IP address** or URL.
5. Enter the Port Number that was assigned to Landing Pad. The default port is **55555**. This port number must be opened on a company firewall.